

# SCHMERSAL Tech Briefs: Emergency Cable Pull Switches



**ZQ700**  
up to 10 M



**ZQ900**  
up to 75 M



**T3Z 068**  
Bi-directional,  
up to 50 M  
both directions



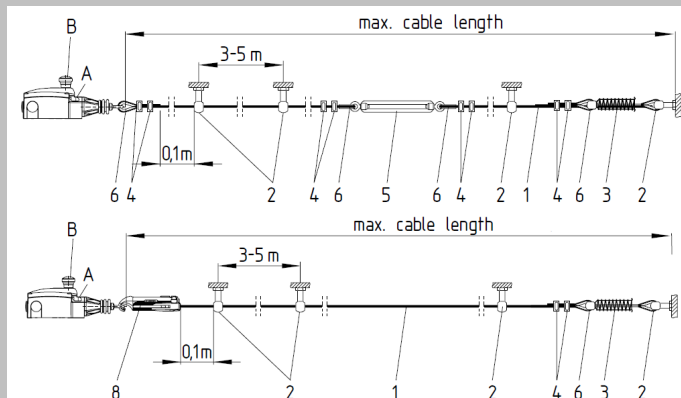
## Overview

Emergency Cable Pull Switches are designed to provide continuous emergency stop control along exposed areas of machinery and conveyors which present hazards to operator/maintenance personnel. As such, they can fulfill the requirements of having a means of an emergency shutdown at every area where a work related task is being performed. Unlike isolated E-Stop pushbuttons, emergency cable-pull systems can be actuated at any point along the "trip wire".

Schmersal emergency cable pull switches feature the required reset function, double-break contact blocks offering a choice of several contact variations, optional integrated E-Stop palm button and the required means of tension monitoring. Once the trip wire is tensioned, the switch will initiate an emergency shutdown if an operator falls into, is pulled into, or pulls on the trip wire and will also fail to safe if the cable is cut or goes slack.

The compact ZQ700 is capable of spanning lengths of up to 10 meters. The rugged ZQ900 is capable of spanning lengths of up to 75 meters and features an optional integrated E-Stop pushbutton. The T3Z068 is a heavy duty bidirectional model, allowing for 50 M in both directions and has either a pull ring or key reset.

## Cable Pull Accessories



- |                          |                            |
|--------------------------|----------------------------|
| 1 Wire rope (STQ441-SC)  | 5 Tensioner (STQ441-TB)    |
| 2 Eyebolt (STQ441-EB)    | 6 Wire thimble (STQ441-TH) |
| 3 Spring (RZ-####)       | 7 Shackle (S900-SH)        |
| 4 Wire clamp (STQ441-CC) | 8 Rope tensioner (S900)    |



## Ordering Details

### ZQ700-①

- ① Contacts:  
11 1 NO & 1 NC  
02 2 NC

### ZQ900-①-②

- ① Contacts:  
11 1 NO & 1 NC  
13 1 NO & 3 NC  
22 2 NO & 2 NC  
02 2 NC  
04 4 NC
- ② Emergency Stop pushbutton:  
Blank without E-Stop button  
N with E-Stop button

### T3Z068-①YR②③

- ① Contacts:  
11 1 NO & 1 NC  
22 2 NO & 2 NC  
33 3 NO & 3 NC
- ② Reset Type:  
Blank Pull ring reset  
S Key reset
- ③ Indicator Lamp:  
Blank without indicator lamp  
G with indicator lamp

## Accessories

- |                    |                  |
|--------------------|------------------|
| <b>STQ441-SC</b>   | Wire rope (red)  |
| <b>S900</b>        | Rope tensioner   |
| <b>S900-SH</b>     | Shackle          |
| <b>STQ441-EB</b>   | Eyebolt          |
| <b>STQ441-CC</b>   | Wire clamp       |
| <b>STQ441-TB</b>   | Tensioner        |
| <b>STQ441-TH</b>   | Wire thimble     |
| <b>STQ441-PU</b>   | Pulley           |
| <b>PL-M20-24V</b>  | Signal lamp      |
| <b>PL-M20-120V</b> | Signal lamp      |
| <b>RZ-2041</b>     | Spring (ZQ900)   |
| <b>RZ-1731</b>     | Spring (ZQ700)   |
| <b>RZ-163E</b>     | Spring (T3Z 068) |

Contact us for information on customizing a complete cable pull system - a preassembled kit which will include the cable pull switch, cable cut to length, and all the accessories needed for installation.

## Applications

- Conveyors
- Packaging
- Transfer Machines
- Wood Working Equipment
- Textiles
- Presses

## Available Literature



GK-1 Machine Guarding  
Safety Products Catalog  
Section 2

## Contact

**Schmersal Nordiska AB**  
Västra Frölunda  
Tel: +46 31 338 35 00  
E-mail: info-se@schmersal.com

**Schmersal Norge**  
Drammen  
Tel: +47 22 06 00 70  
E-Mail: info-no@schmersal.com

**Schmersal Danmark AS**  
Hvidovre  
Tel: +45 70 20 90 27  
E-Mail: info-dk@schmersal.com